



**Exam** : **EMC E20-570**

**Title** : networked storage cas specialist  
exam

**Update** : Demo

1. Which tool provides the diagnostics screens for the Centera?

- A. CASScript
- B. CenteraCLI
- C. CenteraScript
- D. CenteraViewer

**Answer:** D

2. What is a method for setting retention at the object level?

- A. API
- B. HPP
- C. MOPI
- D. Control Center

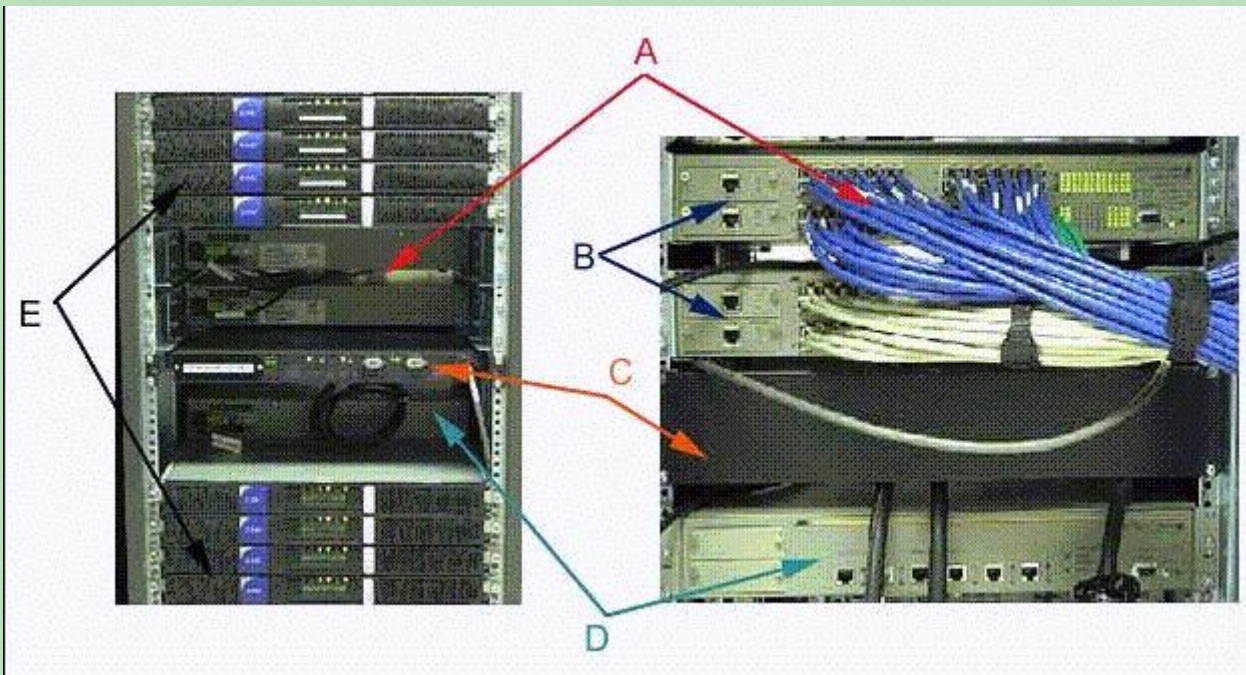
**Answer:** A

3. A customer wants to enable application profiles in their environment. Their application does NOT natively support application profile use. How does this windows application specify a path to the application security profile?

- A. Have the application access the root profile on the Centera
- B. Application keeps the security profile as part of the metadata
- C. Create a profile and place it in the ini file of the application; then restart the application
- D. Add the CENTERA\_PEA\_LOCATION environment variable to the windows application server

**Answer:** D

4. Click the Exhibit button. From the exhibit, identify component A.



- A. Node
- B. Cube switch
- C. Battery backup
- D. External switch

**Answer: B**

5. A customer with CE+ needs many different retention periods but their application does NOT support a native integration of the API. How does a customer meet this requirement?

- A. Migrate all data to a native application
- B. All data will have an infinite retention period
- C. It is impossible to use retention periods for non-native applications
- D. Use a filesystem-based gateway with different retention periods set on each shared folder

**Answer: D**

6. How does fixed content differ from backup data?

- A. Fixed content is a subset of backup data
- B. Fixed content has long-term reference value
- C. Backup data sets are a subset of fixed content

D. Backup data sets can include multiple revisions of a file while Fixed content is WORM data

**Answer: B**

7. What is required to store data on the Centera?

- A. Centera API
- B. Centera CLI
- C. CenteraViewer
- D. Centera store software

**Answer: A**

8. How would a PC be connected to a CUA if a standard monitor and keyboard were not available onsite?

- A. Via crossover serial cable and a terminal emulator configured for 7 1 Even
- B. Via crossover serial cable and a terminal emulator configured for 8 1 None
- C. Via straight through serial cable and a terminal emulator configured for 7 1 Even
- D. Via straight through serial cable and a terminal emulator configured for 8 1 None

**Answer: B**

9. How long does content reside on a CUA before it is written to a Centera?

- A. One minute, depending on system load
- B. Typically 45 minutes or when cache is full
- C. Content is immediately written to the Centera
- D. Content is not written directly to the Centera by the CUA

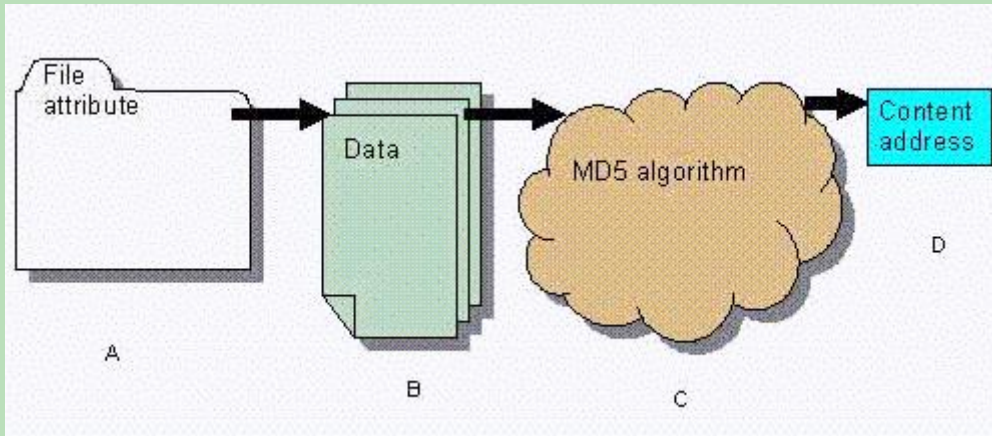
**Answer: B**

10. Which protection scheme provides maximum useable storage?

- A. CPM
- B. CPP
- C. RAID 4
- D. RAID 1/0

**Answer: B**

11. Click the Exhibit button. What is the BLOB?



A. A

B. B

C. C

D. D

**Answer: B**

12. Which algorithm is used to help calculate the content address?

A. API

B. MD5

C. MOBI

D. SHA-1

**Answer: B**

13. What is required to link two (2) Centera cabinets in one (1) cluster?

A. ATS

B. Root switches

C. Media converter

D. Gigabit uplink modules

**Answer: D**

14. How is the Centera connected to the mainframe? 1. ESCON 2. HTTP 3. FICON 4. TCPIP

- A. 1, 2, 3
- B. 1, 2, 4
- C. 1, 3, 4
- D. 2, 3, 4

**Answer: C**

15. Which vendors offer gateway software for the Centera?

- A. Microsoft, SAP, Onyx, Dell
- B. IBM, Lotus, FileNet, StorageTek
- C. Legato, EMC, SevenTen, Arkivio, Enigma
- D. Powerfile, Oracle, Mobius, Princeton Softech

**Answer: C**

16. Which objects are replicated when replication is enabled?

- A. All objects
- B. Only CDFs
- C. Only data BLOBs
- D. Only objects greater than 250K

**Answer: A**

17. A customer's application groups objects into a single container before writing them to the Centera. The customer is using a Centera CE+. Half of the objects should be kept for 3 years, and the remainder for 7 years. Which retention period should the customer set on the container to protect their data?

- A. Do not set the retention period
- B. Set the retention period to 3 years
- C. Set the retention period to 7 years
- D. Set the retention period to 50% 3 year, and 50% 7 year.

**Answer: C**

18. Which troubleshooting utilities are available for the Centera?

- A. Centera Verify and Telnet
- B. Ping and CentralPconfig
- C. CenteraPing and CenteraVerify
- D. CenteraViewer and PingCentera

**Answer: C**

19. What is the purpose of Centera Verify?

- A. Verify a completed write
- B. Verify Centera read and write performance
- C. Verify availability of the Centera for writes, reads and deletes
- D. Verify availability of the target Centera in a replicated environment

**Answer: C**

20. A customer is required to keep dental records for seven years. Which edition of Centera is recommended?

- A. Basic
- B. Compliance
- C. Enhanced basic
- D. Compliance plus

**Answer: B**

21. Which application is an appropriate target for Centera Solutions?

- A. Online Gaming
- B. Real Time Stock Quotes
- C. Hospital Records Management
- D. Database transaction logs storage

**Answer: C**

22. How often is a CUA synchronized with its clustered partner?

- A. Every 5 minutes or 500 writes, whichever occurs first
- B. Every 15 minutes or 1500 writes, whichever occurs first
- C. The synchronization between CUA pairs is user settable
- D. The clustered CUA pair share disk, therefore they are always synchronized

**Answer: A**

23. How does Centera manage replaced mirrored disk drives?

- A. Centera mirrors objects but does not mirror hardware
- B. CenteraStar OS has the intelligence to mirror drives of any size
- C. Replacement disks and nodes must have the same size storage resources
- D. Newly provisioned resources are always an even multiple of the drive being replaced

**Answer: A**

24. Which market is suitable for Centera in the mainframe space?

- A. CICS system
- B. Email Archiving
- C. Websphere application
- D. Enterprise Content Management

**Answer: D**

25. Which utility can be used to read a Centera health report?

- A. Wordpad
- B. Acrobat reader
- C. Health report parser
- D. Health report reader

**Answer: C**



26. How does Centera verify Content Authenticity?

- A. The system disk and BLOB directory are mirrored within each Storage Node
- B. The CDF and BLOB are stored on the Centera and permanently CRC checked
- C. The CA of the data BLOB is generated by MD5 and verified with the CA in the CDF
- D. The CA of the data BLOB is generated by MD5 and verified with the CA stored in the application

**Answer: C**

27. How is network bandwidth throttled between replicating Centera clusters?

- A. Managed at the network layer
- B. Reduce the number of access nodes
- C. Reduce the number of replication threads using the CLI
- D. Use the "set replicationbandwidth= " command in the CLI

**Answer: B**

28. Which option is available for alerting in the event of a failure on a Centera CE+ Plus?

- A. Email home (SMTP) via modem directly attached to a Storage Node
- B. Email home (SMTP) via modem directly attached to a Storage Node and SNMP
- C. Email home via the OnAlert workstation also running SMTP, Control Center v5.2, SNMP
- D. No remote alerting; customer needs physical access to the array to be notified of failures

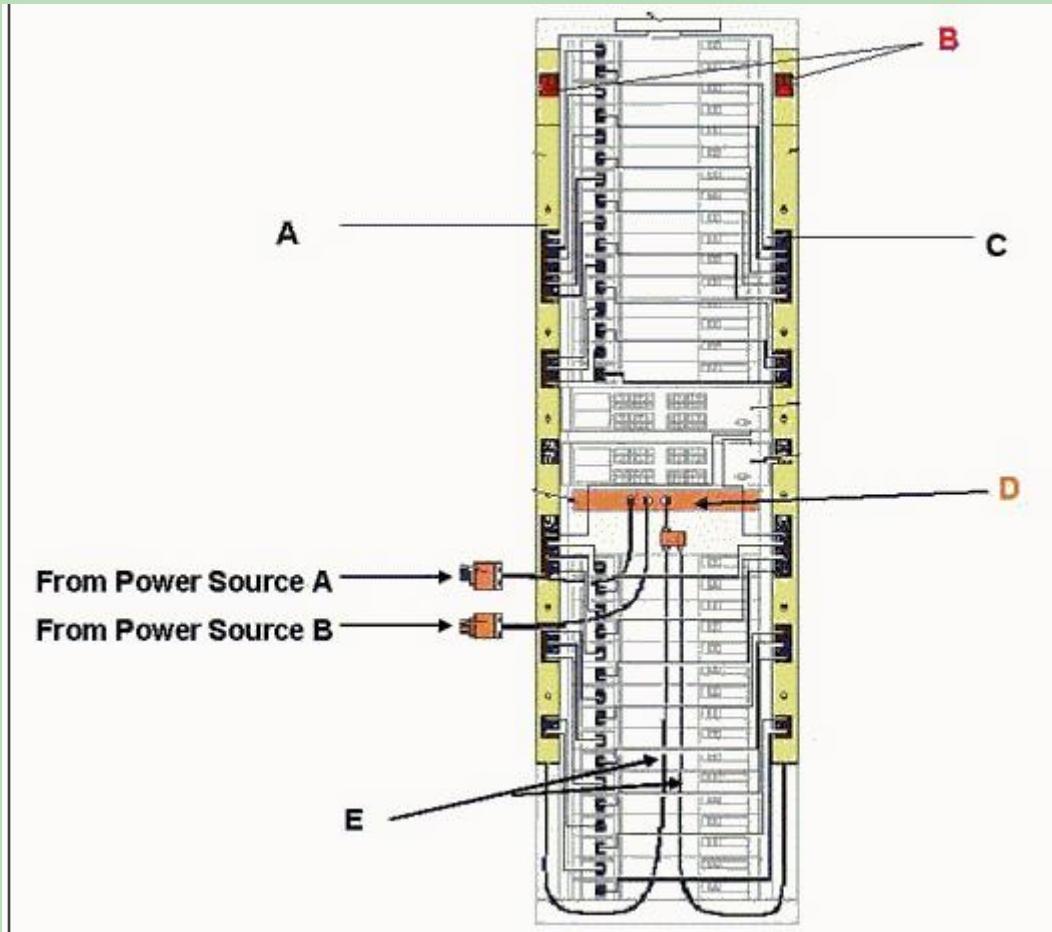
**Answer: C**

29. How often does a Centera generate a health report?

- A. Once an hour
- B. Once a day
- C. Once a week
- D. Once a month

**Answer: B**

30. Click the Exhibit button. From the exhibit, identify component D.



A. ATF

B. ATS

C. Power breaker

D. Battery backup

**Answer: B**