



Exam : **EMC E20-540**

Title : EMC Networked Storage-nas
Specialist Exam

Update : Demo

1. What is a benefit of using ATA storage in NAS environment?

- A. Low performance storage for OLTP applications
- B. High performance storage for OLTP applications
- C. High volume storage for high performance environment
- D. High volume storage for low performance environments

Answer: D

2. Which command is used to verify anti-virus functionality at the Data Mover?

- A. server_av
- B. server_setup
- C. server_viruschk
- D. server_antivirus

Answer: C

3. Celerra quotas are turned off. How does that affect the existing user and group quota information?

- A. it will be lost
- B. is maintained
- C. will still be active
- D. becomes unavailable

Answer: B

4. Which is used for centralized user and group management in a UNIX environment?

- A. NIS
- B. UFS
- C. UDP
- D. NTLM

Answer: A

5. Which network component isolates network segments?

- A. ISL
- B. STP
- C. VLAN
- D. LACP

Answer: C

6. Which two [2] methods allow access to the hidden ".ckpt" directory created by SnapSure?

- A. Enter the entire path into Start > Run > \\server_x\SnapSure\ckpt
- B. Browse to the .ckpt directory using Windows Explorer
- C. Append .ckpt to the path shown when mapping a network drive.
- D. Type the entire path directly into the Address bar in Windows Explorer

Answer: AD

7. An NS700G is being installed which will be connected to both Symmetrix and CLARiiON storage. Based on best practices, where should the Celerra Control Volumes be placed?

- A. CLARiiON
- B. Symmetrix
- C. Control Station
- D. Either the Symmetrix or CLARiiON

Answer: B

8. What is a new SnapSure feature in NAS 5.2?

- A. Out of order deletion of Checkpoints
- B. Multiple checkpoints of a single filesystem
- C. Checkpoint restore with a single command
- D. Uses a bitmap to track the location of changed data

Answer: A

9. An unprotected disk containing Oracle binaries fails. What action needs to be taken when the database

resides on Celerra?

- A. None
- B. Restart the Oracle DB
- C. Reinstall the entire Oracle package
- D. Initiate a Data Mover failback and restart the Oracle DB

Answer: C

10. Which SRDF mode does a TimeFinder/FS Near Copy implementation use?

- A. Near copy
- B. Synchronous
- C. Adaptive copy
- D. Asynchronous

Answer: B

11. Click the Exhibit button.

The screenshot shows the EMC NAS Administration interface. The left-hand navigation tree is expanded to show 'CIFS Shares'. The main content area displays a table of CIFS Shares for 'All Data Movers'.

Name	File System	Path	CIFS Servers	Data Mover	Comment
share1	demo_fs_2	\demo_fs_2\abcdef	fenway	server_2	abcdef on demo_
share2	demo_fs_2	\demo_fs_2\xyz	fenway, wrigley	server_2	xyz on demo_fs_
share3	demo_fs_2	\demo_fs_2	wrigley	server_2	Root of demo_fs_
share4	demo_fs_3	\demo_fs_3\jkl	All	server_3	jkl on demo_fs_3

Which three [3] shares are visible on \\fenway?

- A. share1
- B. share2
- C. share3
- D. share4

Answer: ABD

12. Which assigns the Fibre Channel WWN?

- A. Name server
- B. Operating system
- C. System Administrator
- D. Hardware manufacturer

Answer: D

13. What is a benefit of Celerra Data Migration Service (CDMS)?

- A. Minimal service disruption
- B. Manual migration of all old data
- C. Automatic data defragmentation
- D. Automatic restoration of multi-protocol permissions

Answer: A

14. Which Data Mover failover policy tries to recover the primary Data Mover before activating the standby?

- A. Fast
- B. Auto
- C. Retry
- D. Manual

Answer: C

15. What is the difference between the Celerra CNS-14 and the CFS-14?

- A. CNS-14 does not have a keyboard or monitor
- B. The CNS-14 does not have a keyboard or monitor
- C. CFS-14 has one Control Station, CNS-14 has two
- D. CNS-14 has a keyboard and monitor on the outside of the front door, CFS-14 has the key board and monitor on the inside of the front door

Answer: A

16. Which procedure configures Windows users' home directories on a Celerra CIFS server?

- A. Configure the homedir file with the path for each domain user

Enable the home directory option on the Data Mover

Export the appropriate path as the share name HOME

Edit the profile of each users account.

B. Configure the homedir file with the path for each domain user

Enable the home directory option on the Data Mover

Create a directory in the correct location for each user

Edit the profile of each existing user's account.

C. Configure the homedir file with the path for each domain

Export the path as the share name HOME

Enable the home directory option on the Data Mover

Edit the profile of each users account using the %user% variable

D. Configure the homedir file with the path for each domain

Enable the home directory option on the Data Mover

Create a directory in the correct location for each user

Edit the profile of each users account using the %user% variable

Answer: B

17. Which boot selection and configuration file is used to install NAS 5.2 on a CFS-14 with minimal user intervention?

A. <P>boot selection: install configuration file: eth2.cfg</P> <P> </P>

B. <P>boot selection: kickstart configuration file: ksnas.cfg </P> <P> </P>

C. <P>boot selection: serialinstall configuration file: ksnas.cfg</P> <P> </P>

D. <P>boot selection: serialkickstart configuration file: eth2.cfg</P> <P> </P>

Answer: B

18. How is a CIFS share made visible through only a single CIFS server and its aliases?

A. Add the shares to the CIFS server after its creation

B. Specify the -netbios option during the export process

C. Specify the -comname option during the export process

D. Specify the share name(s) when creating the CIFS server

Answer: B

19. Which command is used to create a new user on the Data Mover for FTP?

- A. nas_user
- B. nas_newuser
- C. server_user
- D. server_ftpuser

Answer: C

20. What is a feature of Celerra Manager Basic Edition in NAS 5.2?

- A. Data Migration feature
- B. Launch Celerra Monitor
- C. Multiple Celerra support
- D. Tree quota management

Answer: D

21. Which NS600 cache data is written to the vault area in the event of a power failure?

- A. Read
- B. Write
- C. NVRAM
- D. Write and read

Answer: B

22. What is the recommended striped volume configuration on a Celerra/Symmetrix for an Oracle DB?

- A. 32k depth over 2 disks with a block size of 8k
- B. 32k depth over 2 disks with a block size of 32k
- C. 32k depth over 4/8 disks with a block size of 8k
- D. 64k depth over 4/8 disks with a block size of 32k

Answer: C

23. From where will the data be read when a bitmap value of a data block in a SnapSure checkpoint is 1?

- A. PFS
- B. cache
- C. bitmap
- D. SavVol

Answer: D

24. Which two [2] replication choices are available with Celerra Replicator?

- A. local
- B. remote
- C. checkpoint
- D. synchronous

Answer: AB

25. What is the fully functional state of a Virtual Data Mover?

- A. loaded
- B. mounted
- C. PermUnloaded
- D. TempUnloaded

Answer: A

26. Where is Internal Usermapper located?

- A. on the Control Station
- B. Virtual Data Mover level
- C. physical Data Mover level
- D. spread over all Usermapper servers

Answer: C

27. What is the external network device name of an NS600 Data Mover?

- A. eth

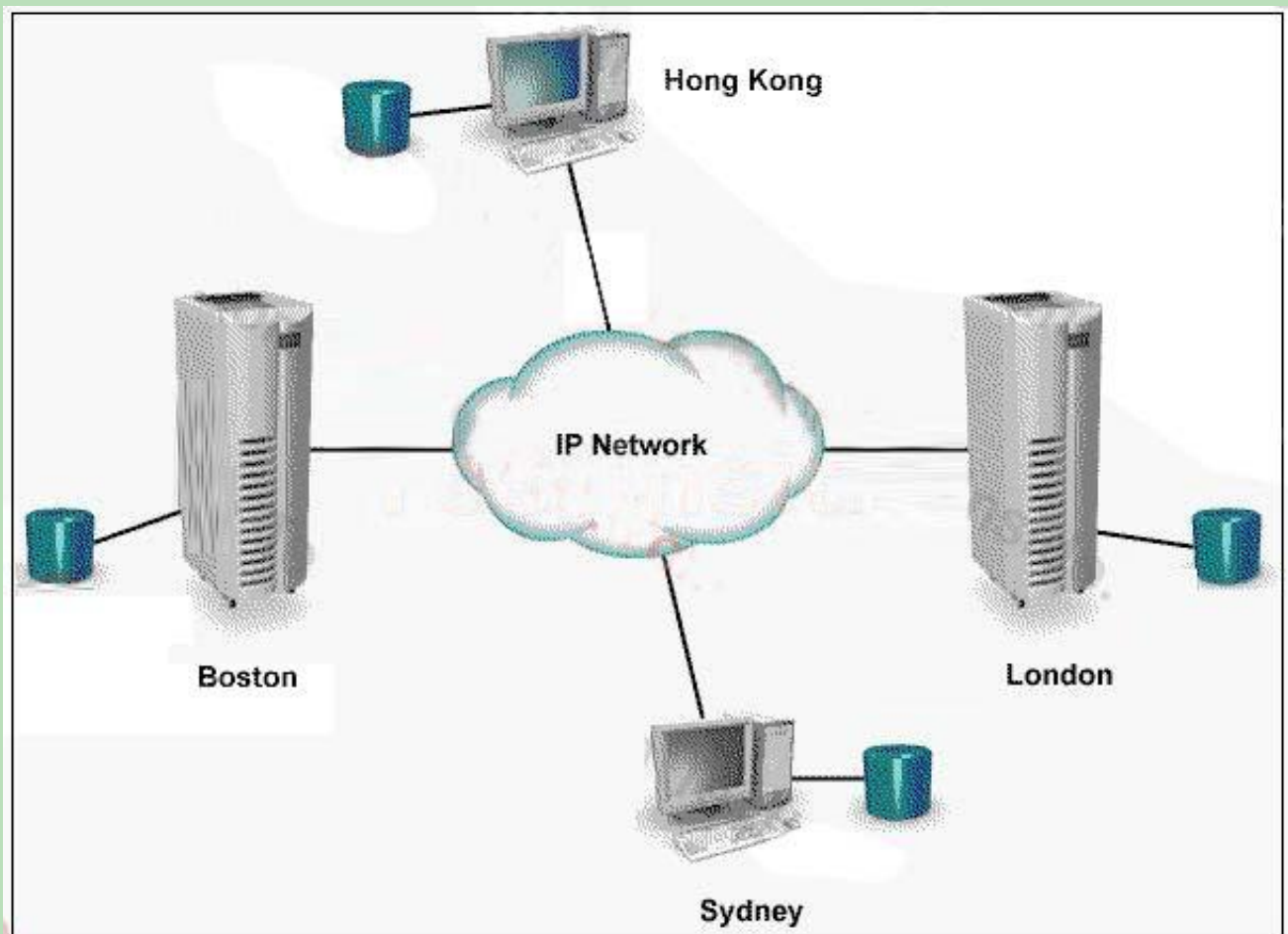
B. ace

C. ana

D. cge

Answer: D

28. Click the Exhibit button.



Two Celerras are located in London and Boston. A NAS solution is required that maintains a copy of the Celerra data on a Sun server in Hong Kong, and an HP server in Sydney. Which NAS solution is appropriate?

A. FarCopy

B. Replicator

C. OnCourse

D. Symmetrix Remote Data Facility

Answer: C

29. Which TimeFinder/FS mode is required to cause all changes to be made simultaneously to the Production File System and its Business Continuance Volume?

- A. Mirror on
- B. Mirror off
- C. Save mode
- D. Copy mode

Answer: A

30. Which two [2] are approved uses of EMC's implementation of Cisco Systems Fast EtherChannel (Celerra Trunking)?

- A. Bandwidth Aggregation
- B. Fault Tolerance among switch ports
- C. Fault Tolerance between multiple switches
- D. Combining multiple physical interfaces into a logical interface

Answer: BD



KillTest.com was founded in 2006. The safer,easier way to help you pass any IT Certification exams . We provide high quality IT Certification exams practice questions and answers(Q&A). Especially [Adobe](#), [Apple](#), [Citrix](#), [Comptia](#), [EMC](#), [HP](#), [HuaWei](#), [LPI](#), [Nortel](#), [Oracle](#), [SUN](#), [Vmware](#) and so on. And help you pass any IT Certification exams at the first try.

You can reach us at any of the email addresses listed below.

English Customer:

Chinese Customer:

Sales : sales@Killtest.com

sales@Killtest.net

Support: support@Killtest.com

support@Killtest.com

English Version <http://www.KillTest.com>

Chinese (Traditional) <http://www.KillTest.net>

Chinese (Simplified) <http://www.KillTest.cn>