



Exam : **EMC E20-532**

Title : Networked Storage-san Specialist
Exam For Storage Admins

Update : Demo

1. Which is an EMC recommended best practice when doing fabric zoning?

- A. Single FA zoning
- B. Multiple FA zoning
- C. Single HBA zoning
- D. Multiple HBA zoning

ANSWER: C

2. When are zoning changes made in EMC VisualSAN 4.0 saved on a DS-16B2 switch?

- A. Immediately
- B. When they are refreshed
- C. When they are committed
- D. At next 30 minute information refresh

ANSWER: C

3. HBA has been replaced on a host in a customer environment. After rebooting the host, you notice that the host still sees all storage devices on all paths. What are two [2] reasons this could happen?

- A. There is no LUN masking deployed on the storage array
- B. Zoning has been disabled on the switch or hardware/port zoning is in effect
- C. The WWPN of the host has not changed and hence there is no need for any changes to the SAN
- D. The old HBA has the same WWPN as the new one

ANSWER: AB

4. What is the maximum number of active Zoneset(s) that a McData fabric can have?

- A. 1
- B. 2
- C. 3
- D. 4

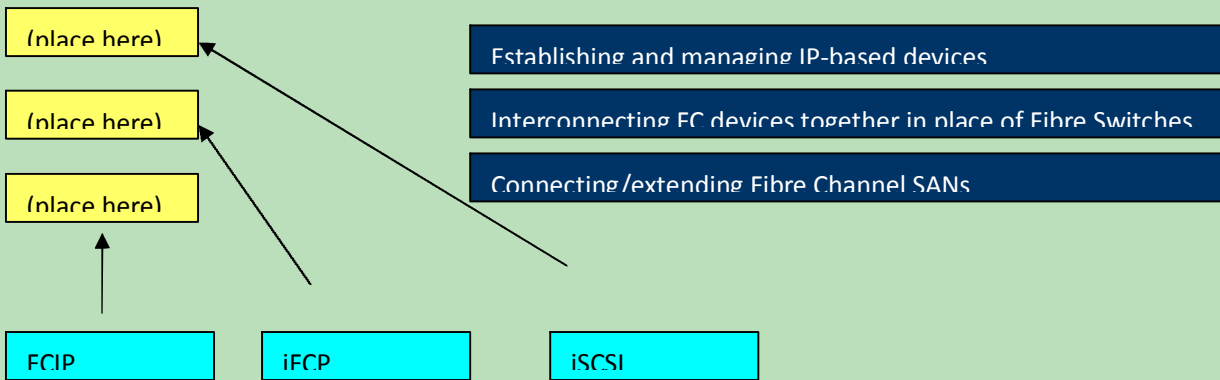
ANSWER: A

5. Click the Task button.

Match the protocol with its definition.

Protocol

Definition

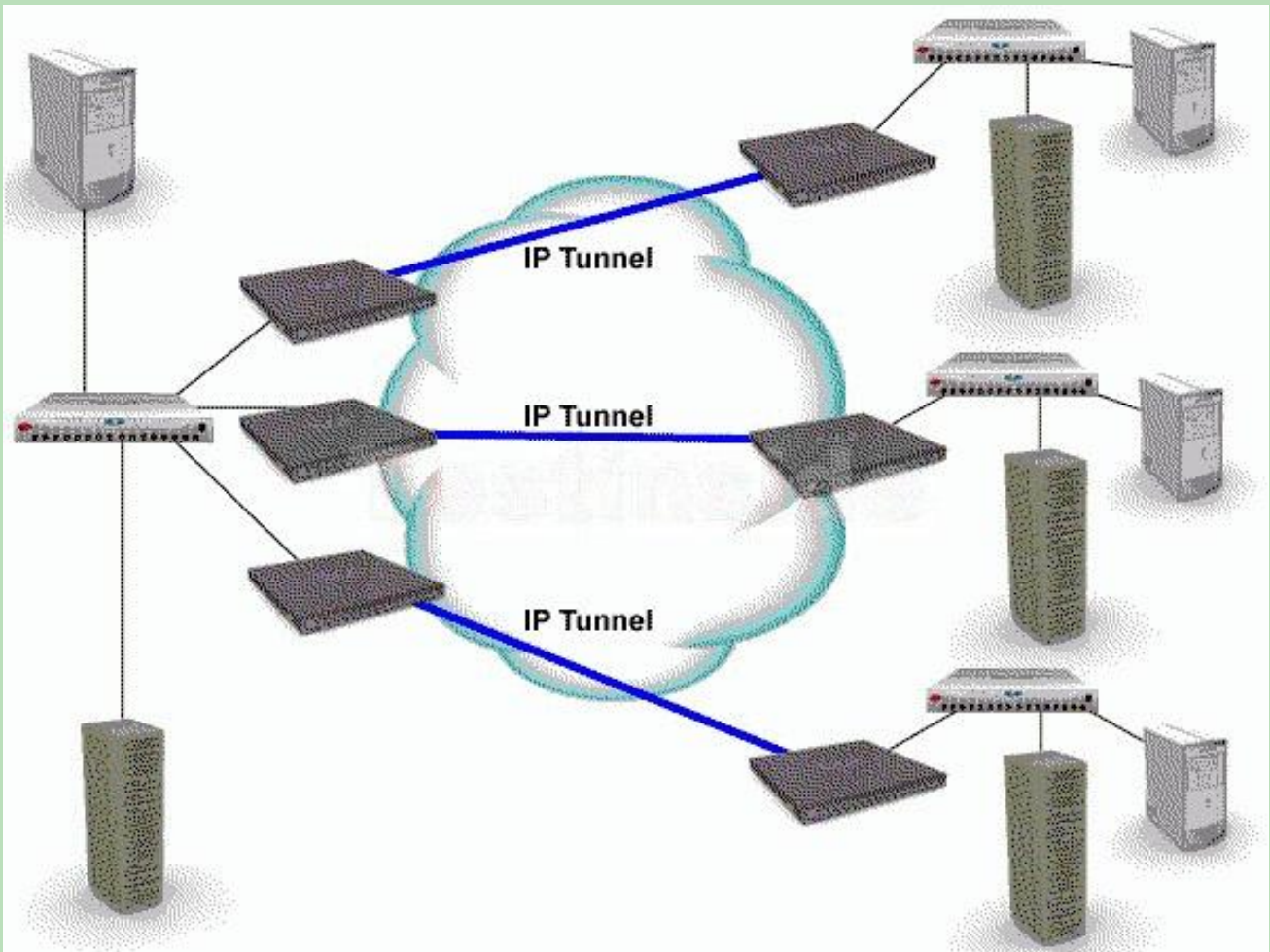


6. Which two [2] topology port classes are supported by all B-series products?

- A.B_port
- B.E_port
- C.FL_port
- D.NL_port

ANSWER: BC

7. Click the Exhibit button.



When scaling a FCIP extended network, what must be taken into account prior to merging the SANs?

- A. Process for future firmware upgrades.
- B. Traffic flows could be disrupted should a storage switch go down.
- C. The combined number of devices in the new FCIP extended SAN.
- D. Inter-switch communication, domain and zone management, and VSANs.

ANSWER: D

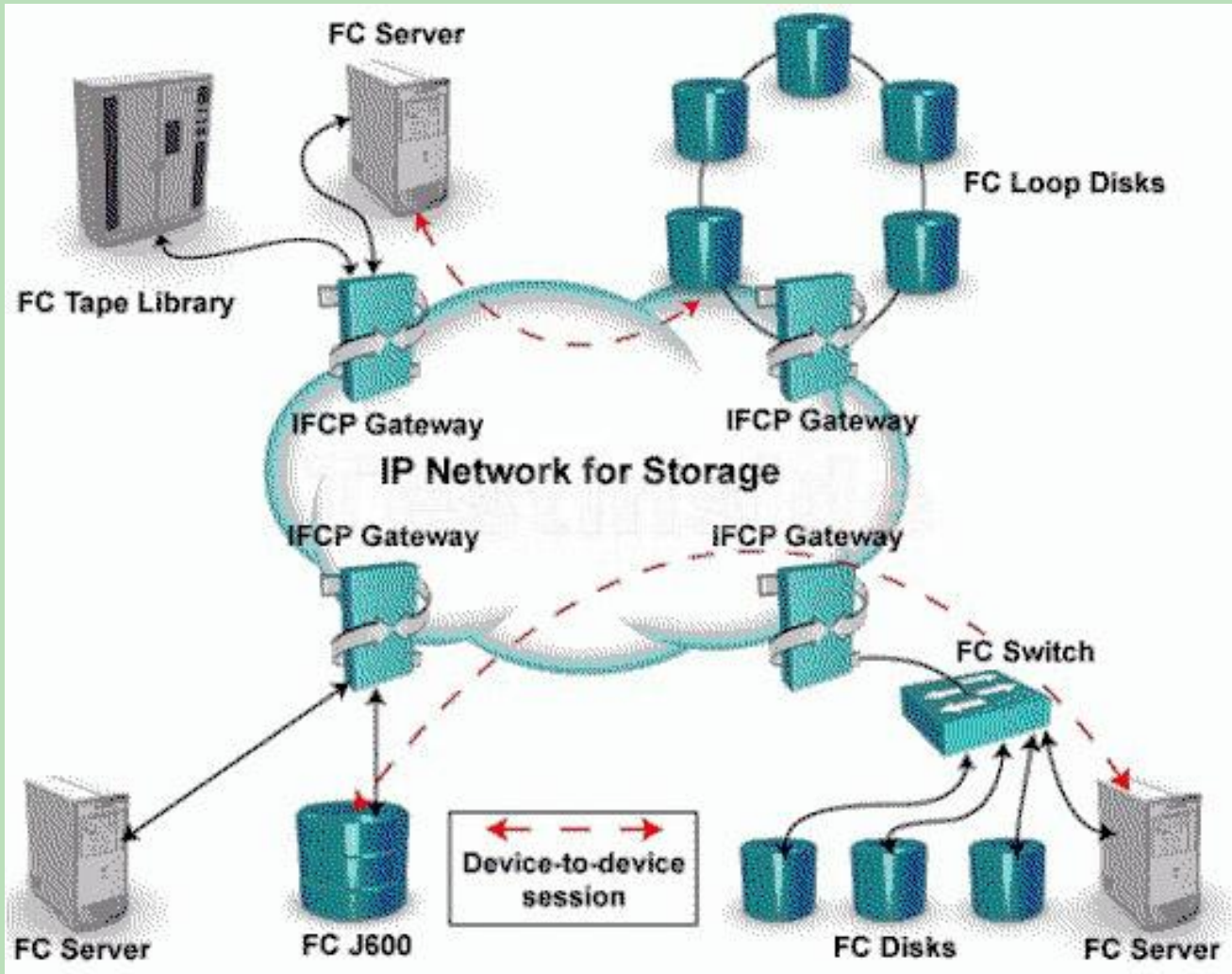
8. What is a feature of iFCP?

- A. Implements TCP/IP over FC
- B. Allows fabrics to remain independent
- C. Maps FC WWNs to TCP headers
- D. Creates end-to-end IP Tunneling connecting SAN fabrics

ANSWER: B

9. Click the Exhibit button.

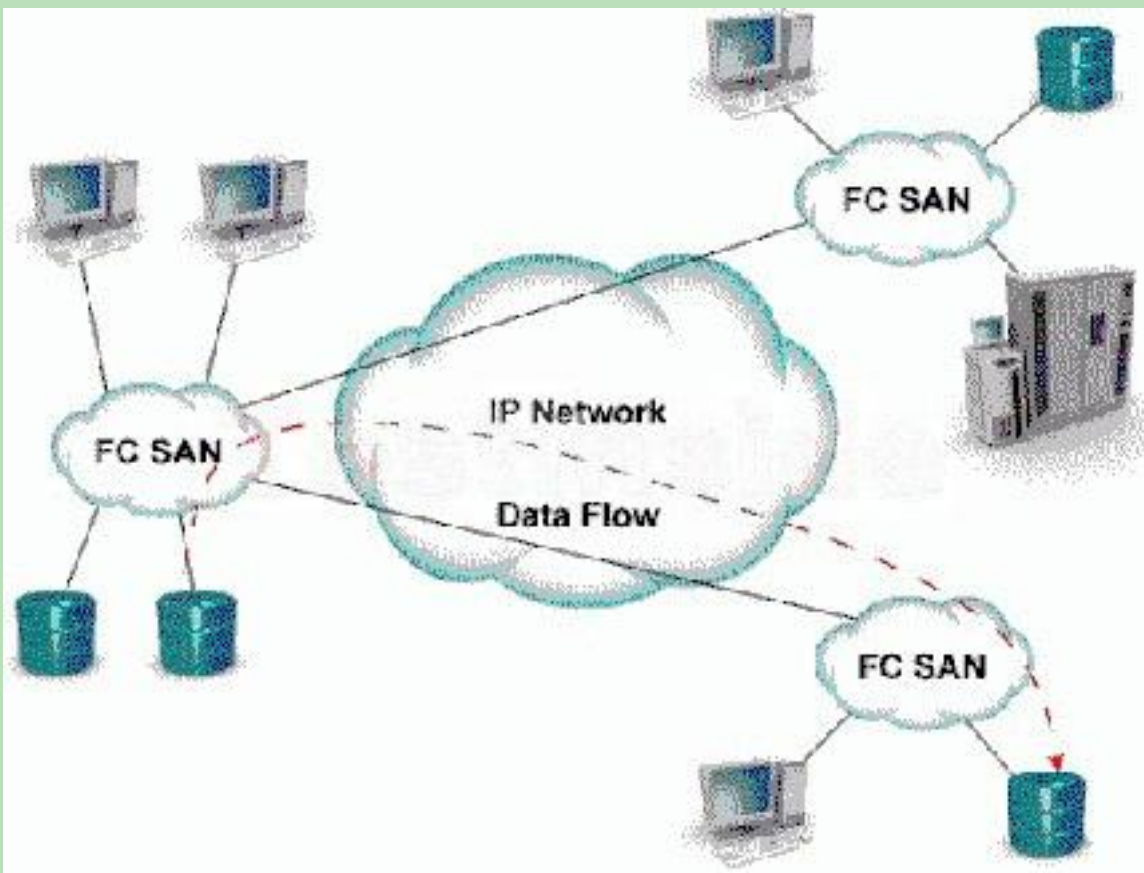
In this implementation, gateways are used to connect existing Fibre Channel devices to an IP network, and as such will include physical interfaces for which two [2] networks?



- A.IP
- B.ATM
- C.Sonet
- D.Fibre Channel

ANSWER: AD

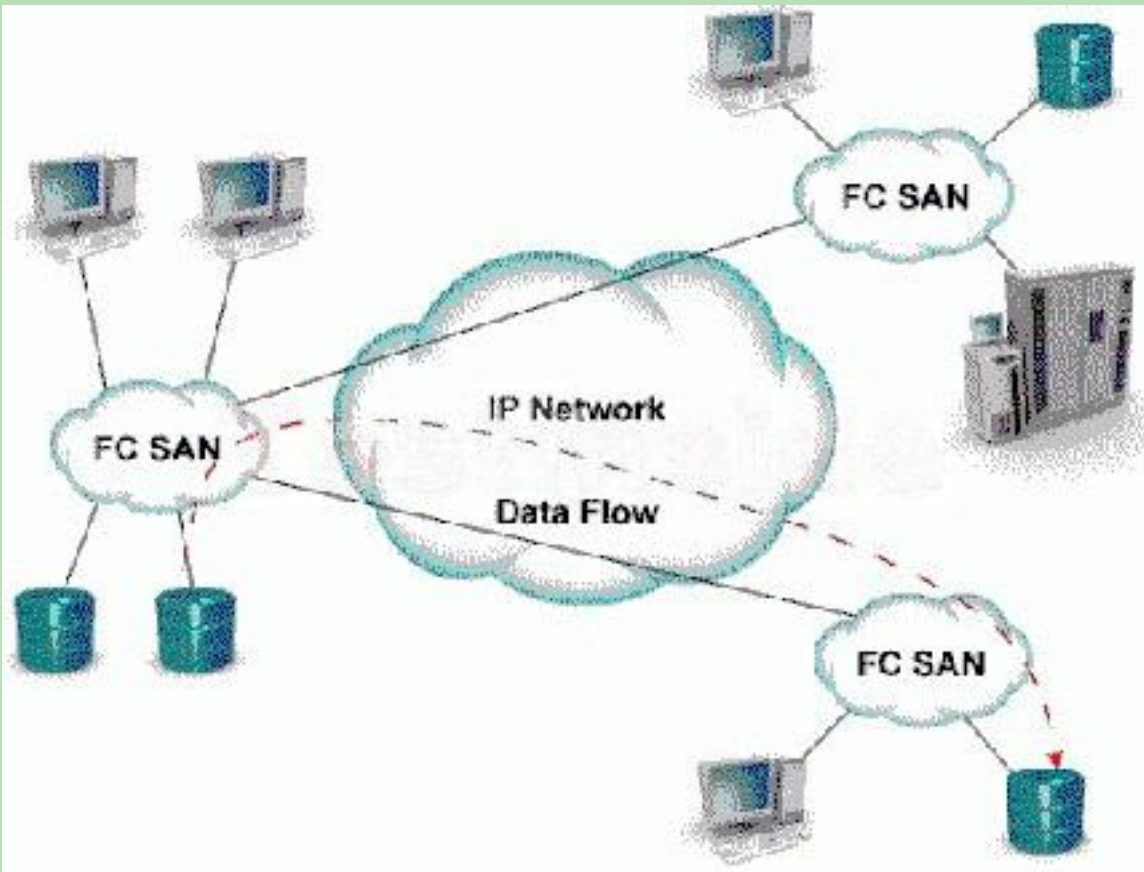
10. Click the Exhibit button. What is represented by data flow in the picture?



- A.FCIP representation of remote DR
- B.ISCSI representation of remote DR
- C.FCIP representation of remote backup
- D.ISCSI representation of remote backup

ANSWER: A

11. Click the Exhibit button.



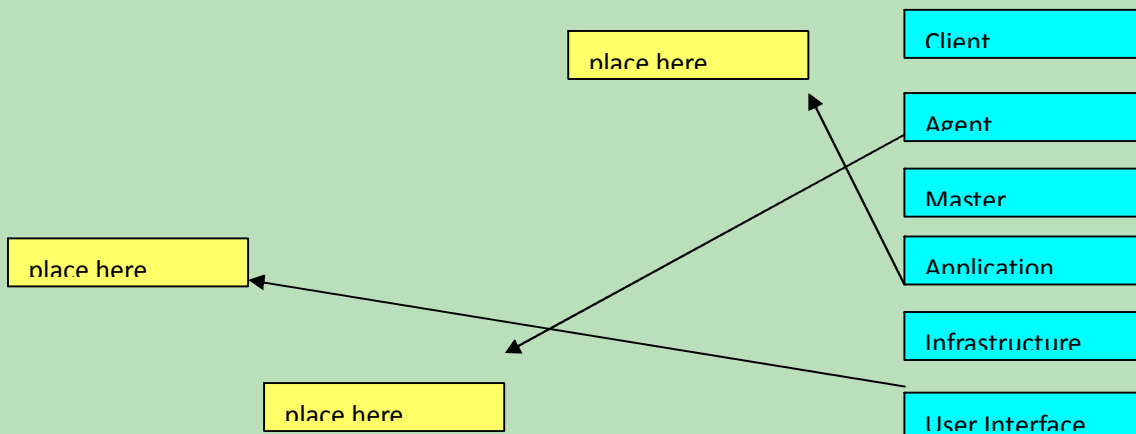
What is represented by the data flow in the picture?

- A. ISCSI representation of remote DR
- B. IFCP representation of remote DR
- C. IFCP representation of remote backup
- D. ISCSI representation of remote backup

ANSWER: C

12. Click the Task button.

What are the three tiers in a single server EMC Control Center installation?(Some labels may not be used.)



13. What will cause the HBAs to be reported in the UNKNOWN pool in a ControlCenter environment?

- A.SDM agent not installed in the infrastructure
- B.Master Agent not running on the host that owns the HBA
- C.SDM agent not running on the server that owns the HBA
- D.Host agent not running on the server that owns the HBA

ANSWER: D

14. What is the function of the SDM agent in EMC ControlCenter?

- A.Fabric zoning for M-series switches
- B.Symmetrix LUN masking
- C.Logical Volume and MetaVolume creation
- D.Data mobility among multiple Symmetrix fames

ANSWER: B

15. A customer has plugged a new host into his SAN but cannot see the HBA WWNs appear in the Topology View of EMC ControlCenter. What are two [2] ways to resolve?

- A.Reset the switch
- B.Rediscover the switch
- C.Enable SNMP on the switches
- D.Install the Host Agent and wait for the host to be discovered

ANSWER: BD

16. Which two [2] agents are required in a ControlCenter environment to enable zoning capabilities?

- A.host
- B.SDM
- C.FCC
- D.master

ANSWER: CD

17. How many bits are in a fibre channel address?

- A.16
- B.24
- C.32
- D.64

ANSWER: B

18. How many bits does a WWN contain?

- A.16
- B.24
- C.32
- D.64

ANSWER: D

19. Which Fibre channel address is reserved for the Directory Server?

- A.FFFFFB
- B.FFFFFC
- C.FFFFFD
- D.FFFFFE

ANSWER: B

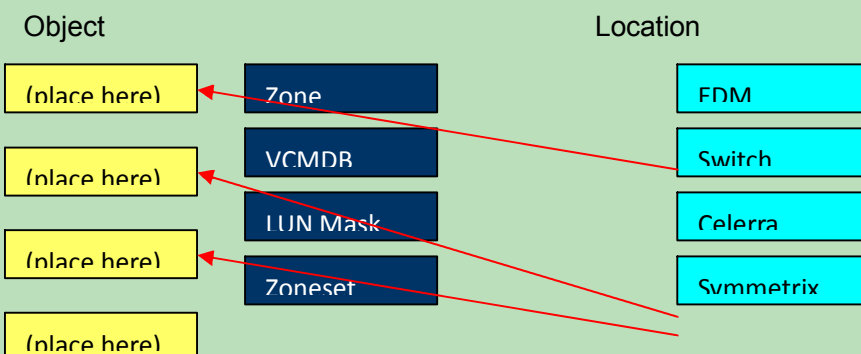
20. What step must be performed to introduce new switches into a ControlCenter infrastructure?

- A.Add
- B.Import
- C.Manage
- D.Discover

ANSWER: D

21. Click the Task button.

Match the SAN management object to the location where it resides.(Labels might be used more than once or not at all.)



22. You are connecting a SAN Gateway to a Fibre Channel Switch. The WWN of port 8 on the Gateway is:
10:00:00:60:45:16:0A:0D

Which WWPN would appear on the switch for this port?

- A. 10:00:08:60:45:16:0A:0D
- B. 10:08:00:60:45:16:0A:0D
- C. 20:00:08:60:45:16:0A:0D
- D. 20:08:00:60:45:16:0A:0D

ANSWER: D

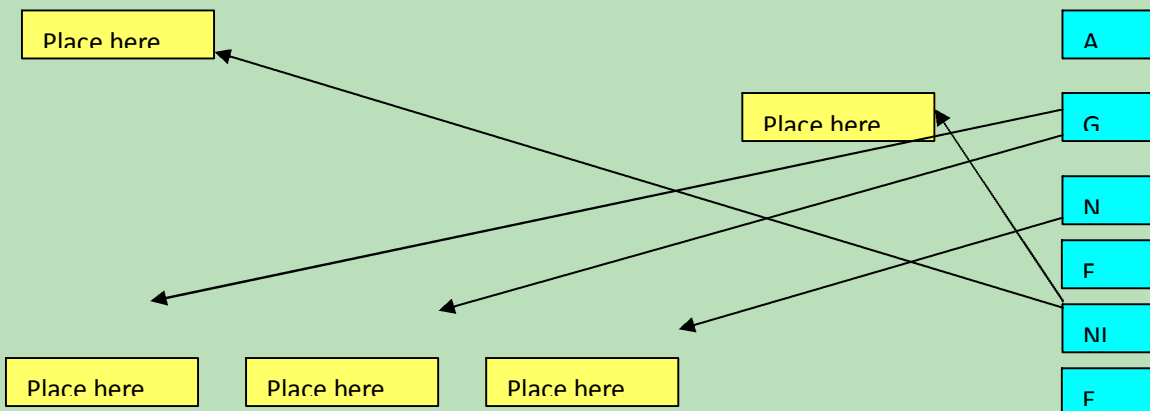
23. A customer has attached a FC-AL tape drive to a fibre channel switch. During FLOGI, as which type of FC port will the switch identify the drive?

- A. E_Port
- B. N_Port
- C. GL_Port
- D. NL_Port

ANSWER: D

24. Click the Task button.

Match the SAN port type to the device. (Labels might be used more than once or not at all.)



25. Click the Task button.

Match the units to their definitions.

Term	Definition
place here	The number of ISLs a frame travels enroute to its destination
place here	Qualified maximum number of initiators that can access
place here	Number of nodes or ports that can contend for the
place here	Qualified maximum number of storage ports that can be

Hop	Fan-in Ratio	Fan-Out Ratio	Oversubscription Ratio
-----	--------------	---------------	------------------------

26. Click the Task button.

Match the SAN port type to the device. (Labels might be used more than once or not at all.)

place here	place here	A
place here	place here	G
	place here	N
		F
		GI
	place here	NI
		F

27. What is the reserved address of the Fabric controller?

- A.FFFFFC
- B.FFFFFD
- C.FFFFFE
- D.FFFFFF

ANSWER: B

28. What does the RCT_L frame field setting indicate?

- A.The arbitrated frame size
- B.Whether a primitive function has been requested
- C.The sequence number of the frame in an ordered set
- D.Whether the fame contains link control information or data

ANSWER: D

29. Where are available zones stored when using Connectrix Manager to add a zone to an existing fabric?

- A.Zone Library
- B.Zones in ZoneSet
- C.Hardware Fabric List
- D.Active Switch Memory

ANSWER: A

30. Which Brocade CLI command prints entries of the nameserver?

- A.nsDisp
- B.nsShow
- C.showNS
- D.showNameServer

ANSWER: B



KillTest.com was founded in 2006. The safer,easier way to help you pass any IT Certification exams . We provide high quality IT Certification exams practice questions and answers(Q&A). Especially [Adobe](#), [Apple](#), [Citrix](#), [Comptia](#), [EMC](#), [HP](#), [HuaWei](#), [LPI](#), [Nortel](#), [Oracle](#), [SUN](#), [Vmware](#) and so on. And help you pass any IT Certification exams at the first try.

You can reach us at any of the email addresses listed below.

English Customer:

Chinese Customer:

Sales : sales@Killtest.com

sales@Killtest.net

Support: support@Killtest.com

support@Killtest.com

English Version <http://www.KillTest.com>

Chinese (Traditional) <http://www.KillTest.net>

Chinese (Simplified) <http://www.KillTest.cn>