

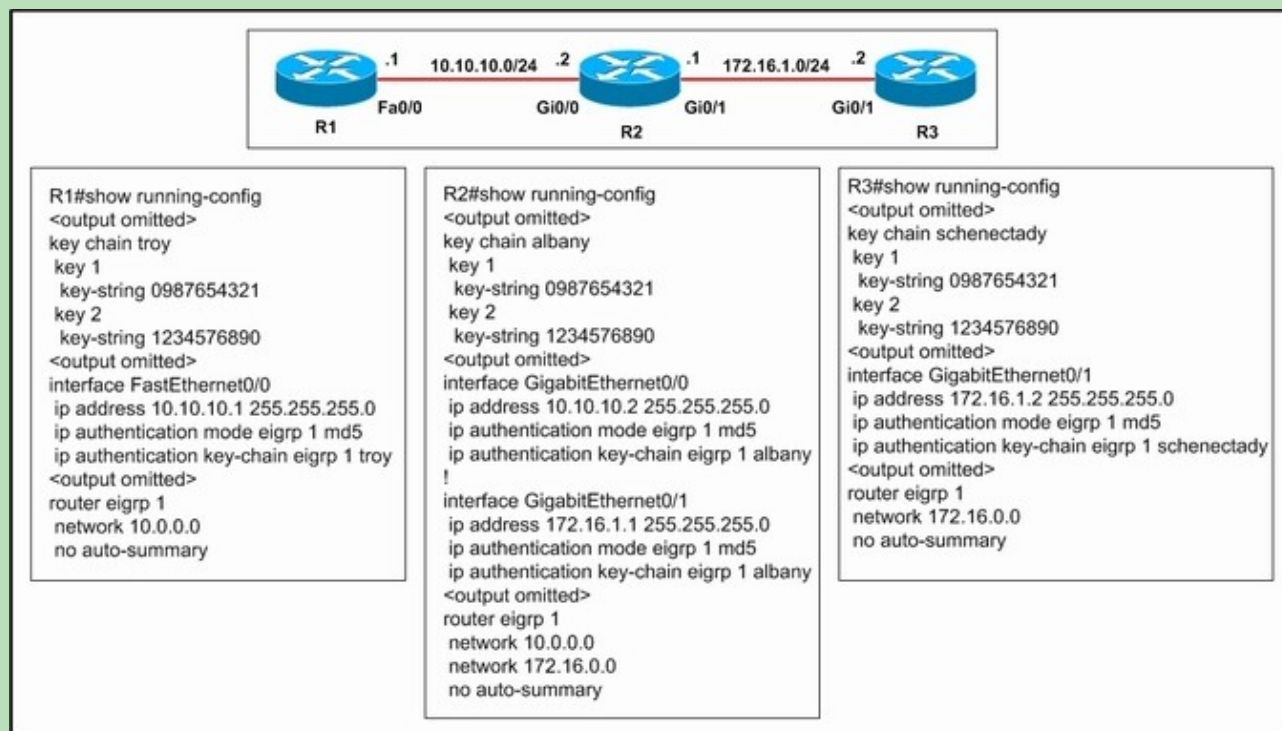


Exam : **Cisco 642-892**

Title : Composite Exam

Update : Demo

1. Refer to the exhibit. EIGRP is configured on all routers in the network. On the basis of the output provided, which statement is true?



- A. Because the key chain names do not match, router R1 will not be able to ping routers R2 and R3 .
- B. Because the key strings do not match, router R1 will not be able to ping routers R2 and R3.
- C. Because authentication is misconfigured on interfaces Gi0/0 and Gi0/1 on router R2, router R1 will not be able to ping routers R2 and R3.
- D. Because autosummarization needs to be turned on for EIGRP on all routers, router R1 will not be able to ping routers R2 and R3.
- E. Router R1 will be able to ping routers R2 and R3.

Answer: E

2. The switches shown in the diagram, Core and Core2, are both Catalyst 2950s. The addressing scheme for each company site is as follows:

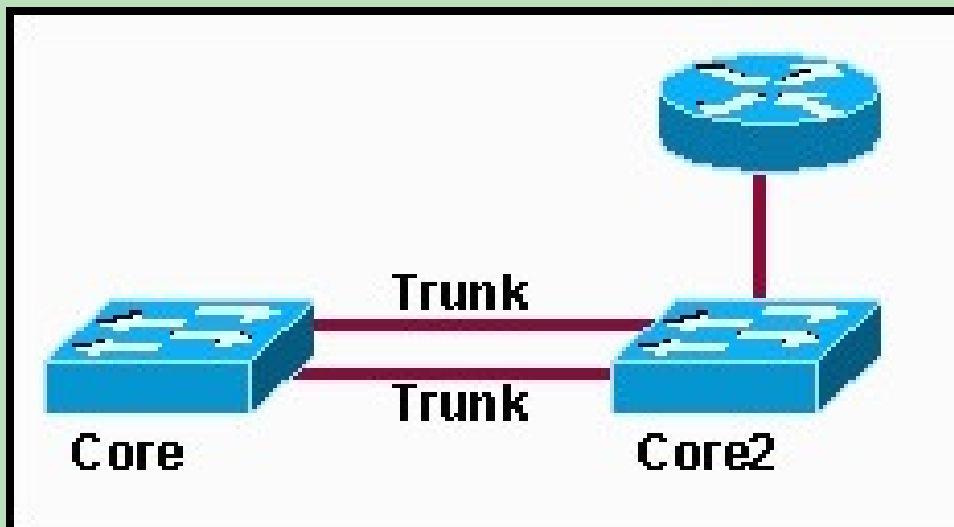
Router Ethernet port - 1st usable address

Core - 2nd usable address

Core2 - 3rd usable address

For this network, which of the following commands must be configured on Core2 to

allow it to be managed remotely from any subnet on the network? (Choose three.)



- A. Core2(config)# interface f0/0
Core2(config-if)# ip address 192.168.1.10 255.255.255.248
- B. Core2(config)# interface vlan 1
Core2(config-if)# ip address 192.168.1.11 255.255.255.248
- C. Core2(config)# line con 0
Core2(config-line)# password cisco
- D. Core2(config)# line vty 0 4
Core2(config-line)# password cisco
- E. Core2(config)# ip default-gateway 192.168.1.9
- F. Core2(config)# ip route 0.0.0.0 0.0.0.0 192.168.1.8

Answer: BDE

3. Which statement is true about IPv6?

- A. Only one IPv6 address is assigned per node.
- B. Only one IPv6 address can be assigned to each interface.
- C. Each host can autoconfigure its address without the aid of a DHCP server.
- D. IPv6 hosts use anycast addresses to assign IP addresses to interfaces.

Answer: C

4. Which two features or capabilities are valid options for both an Autonomous and a Lightweight WLAN solution? (Choose two)

- A. use of a Cisco Wireless Location Appliance for location tracking
- B. use of Cisco Secure Access Control Server (ACS) for security
- C. Cisco Wireless Control System (WCS) for management
- D. PoE capability

Answer: BD

5. Which three statements are true about EIGRP route summarization? (Choose three.)

- A. Manual route summarization is configured in router configuration mode when the router is configured for EIGRP routing.
- B. Manual route summarization is configured on the interface.
- C. When manual summarization is configured, the summary route will use the metric of the largest specific metric of the summary routes.
- D. The ip summary-address eigrp command generates a default route with an administrative distance of 90.
- E. The ip summary-address eigrp command generates a default route with an administrative distance of 5.
- F. When manual summarization is configured, the router immediately creates a route that points to null0 interface.

Answer: BEF

5. Which two statements about the IS-IS routing protocol are true? (Choose two.)

- A. IS-IS is capable of supporting IPv4 and IPv6.
- B. IS-IS is only capable of supporting IPv4 and CLNS.
- C. IS-IS routers use ES-IS hellos (ESH) to establish and to maintain neighbor relationships.
- D. IS-IS routers run the Bellman-Ford algorithm against their LSDBs to pick the best paths.
- E. Level 1 routers learn about paths within the area of which they are a part.
- F. Level 2 routers learn about paths both within areas and between areas.

Answer: AE

6. Which statement is true about Layer 2 security threats?

- A. MAC spoofing, in conjunction with ARP snooping, is the most effective counter-measure against reconnaissance attacks that use dynamic ARP inspection (DAI) to determine vulnerable attack points.
- B. DHCP snooping sends unauthorized replies to DHCP queries.
- C. ARP spoofing can be used to redirect traffic to counter dynamic ARP inspection.
- D. Dynamic ARP inspection in conjunction with ARP spoofing can be used to counter DHCP snooping attacks.
- E. MAC spoofing attacks allow an attacking device to receive frames intended for a different network host.
- F. Port scanners are the most effective defense against dynamic ARP inspection.

Answer: E

7. Refer to the exhibit. A network administrator has configured DHCP services on the router as shown. DHCP clients connected to the FastEthernet0/0 interface are working properly. DHCP clients connected to the FastEthernet0/1 interface are not receiving addresses. Which two statements contain recommendations that will solve the problem? (Choose two.)

```
WanRouter# show running-config
<output omitted>
ip dhcp excluded-address 10.0.0.1 10.0.0.5
!
!
ip dhcp pool Central
  network 10.0.0.0 255.255.255.0
  domain-name Central
  dns-server 10.0.0.2
  netbios-name-server 10.0.0.2
!
!
interface FastEthernet0/0
  ip address 10.0.0.1 255.255.255.0
  duplex auto
  speed auto
!
interface FastEthernet0/1
  ip address 10.10.0.1 255.255.255.0
  duplex auto
  speed auto
!
<output omitted>
```

- A. The ip helper-address 10.0.0.1 command should be issued so that the address can be added to the FastEthernet0/0 configuration.
- B. The ip helper-address 10.0.0.1 command should be issued so that the address can be added to the FastEthernet0/1 configuration.
- C. A second DHCP pool for network 10.10.0.0/24 should be configured.
- D. The network shown in the output under the ip dhcp pool Central command should be changed to network 10.10.0.0 with a mask of 255.255.255.0.
- E. An ip dhcp excluded-address global configuration command for network 10.10.0.0/24 should be issued.

Answer: CE

8. Which two statements about WLAN components are true? (Choose two.)

- A. Cisco Aironet autonomous access points cannot be supported by the Cisco Unified Wireless Network.

- B. Cisco Aironet lightweight access points cannot be supported by the Cisco Unified Wireless Network.
- C. In the autonomous access point solution, control is provided by the Wireless Domain Services (WDS).
- D. In the autonomous access point solution, control is provided by the WLAN controller.
- E. In the lightweight access point solution, WLAN management is provided by the WLAN Solution Engine (WLSE).
- F. In the lightweight access point solution, WLAN management is provided by the WLAN Control System (WCS).

Answer: CF

9. Which command will display EIGRP packets sent and received, as well as statistics on hello packets, updates, queries, replies, and acknowledgments?

- A. debug eigrp packets
- B. show ip eigrp traffic
- C. debug ip eigrp
- D. show ip eigrp interfaces

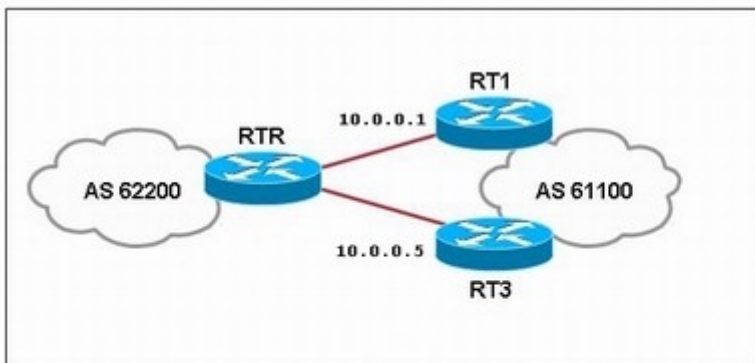
Answer: B

10. Which three statements are true about implementing Cisco wireless LANs? (Choose three.)

- A. LWAPP allows encrypted communication between lightweight access points and WLAN controllers.
- B. The WLAN Solution Engine (WLSE) is used to control lightweight access points.
- C. Power over Ethernet (PoE) is only available when a WLAN controller is integrated into the network.
- D. One of the advantages of the lightweight WLAN solution is that the devices act independently.
- E. Antenna power is a relative value reference to dBi.
- F. Characteristics of antennas are directionality, gain, and polarization.

Answer:

11. Refer to the exhibit. Router RTR is attempting to establish BGP neighbor relationships with routers RT1 and RT3. On the basis of the information that is presented in the exhibit, which two statements are true? (Choose two.)



```

RTR# debug ip bgp
*Mar 1 03:27:00.879: %TCP-6-BADAUTH: No MD5 digest from 10.0.0.1:179 to 10.0.0.2:11032
*Mar 1 03:27:00.883: %TCP-6-BADAUTH: No MD5 digest from 10.0.0.1:179 to 10.0.0.2:11032
*Mar 1 03:27:04.311: %TCP-6-BADAUTH: No MD5 digest from 10.0.0.1:11022 to 10.0.0.2:179
*Mar 1 03:27:12.315: %TCP-6-BADAUTH: No MD5 digest from 10.0.0.1:11022 to 10.0.0.2:179
*Mar 1 03:28:39.659: %TCP-6-BADAUTH: Invalid MD5 digest from 10.0.0.5:11026 to 10.0.0.6:179
*Mar 1 03:28:41.659: %TCP-6-BADAUTH: Invalid MD5 digest from 10.0.0.5:11026 to 10.0.0.6:179
  
```

- A. RTR has a BGP password set but neighbor 10.0.0.1 does not.
- B. RTR has a BGP password set but neighbor 10.0.0.5 does not.
- C. RTR has a BGP password set but neighbor 10.0.0.1 has an incorrect password set.
- D. RTR has a BGP password set but neighbor 10.0.0.5 has an incorrect password set.
- E. Neighbor 10.0.0.1 has a BGP password set but RTR does not.
- F. Neighbor 10.0.0.5 has a BGP password set but RTR does not.

Answer: AD

12. Refer to the exhibit. What two statements are true? (Choose two.)

```

<output omitted>
!
FastEthernet0/0 is up, line protocol is up
  Link Local Address FE80::205:5FFF:FED3:5808, Interface ID 3
  Area 1, Process ID 1, Instance ID 0, Router ID 172.16.3.3
  Network Type BROADCAST, Cost: 1
  Transmit Delay is 1 sec, State BDR, Priority 1
  Designated Router (ID) 172.16.6.6, local address
  FE80::205:5FFF:FED3:6408
  Backup Designated router (ID) 172.16.3.3, local address
  FE80::205:5FFF:FED3:5808
  Timer intervals configured, Hello 10, Dead 40, Wait 40, Retransmit 5
    Hello due in 00:00:05
  Index 1/1/1, flood queue length 0
  Next 0x0(0)/0x0(0)/0x0(0)
  Last flood scan length is 12, maximum is 12
  Last flood scan time is 0 msec, maximum is 0 msec
  Neighbor Count is 1, Adjacent neighbor count is 1
    Adjacent with neighbor 172.16.6.6 (Designated Router)
  Suppress hello for 0 neighbor(s)
  
```


- A. Interface FastEthernet 0/0 was configured with the ipv6 ospf 1 area 1 command.
- B. OSPF version 2 has been enabled to support IPv6.
- C. The IP address of the backup designated router (BDR) is FE80::205:5FFF:FED3:5808.
- D. The output was generated by the show ip interface command.
- E. The router was configured with the commands:router ospf 1 network 172.16.6.0 0.0.0.255 area 1
- F. This is the designated router (DR) on the FastEthernet 0/0 link.

Answer: AC

13. A network administrator would like to configure an EIGRP router as a stub router that advertises directly connected and summary routes only. What command must the administrator issue to accomplish this?

- A. Eigrp stub
- B. Eigrp stub connected
- C. Eigrp stub summary
- D. Eigrp stub connected static
- E. Eigrp stub receive-only

Answer: A

14. Refer to the exhibit. What is the problem with this configuration?



```
Switch#show run interface FastEthernet 0/1
Building configuration...

Current configuration : 233 bytes
!
interface FastEthernet0/1
 switchport mode access
 switchport voice vlan 10
 switchport port-security
 switchport port-security maximum 5
 switchport port-security mac-address sticky
 mls qos trust cos
 spanning-tree portfast
end
```

- A. Spanning tree PortFast cannot be configured on a port when a sticky secure MAC address is used.
- B. Spanning tree PortFast cannot be configured on a port where a voice VLAN is configured.
- C. Sticky secure MAC addresses cannot be used on a port when a voice VLAN is configured.
- D. The switch port must be configured as a trunk.

Answer: C

15. Which statement is true concerning 6to4 tunneling?

- A. IPv4 traffic is encapsulated with an IPv6 header.
- B. The edge routers can use any locally configured IPv6 address.
- C. Hosts and routers inside a 6to4 site will need a special code.
- D. An edge router must use IPv6 address of 2002::/16 in its prefix.

Answer: D

16. What is the difference between the IPv6 addresses ::/0 and ::/128?

- A. ::/0 is the unspecified address, and ::/128 is the multicast address.
- B. ::/0 is the unicast address, and ::/128 is the anycast address.
- C. ::/0 is the unicast address, and ::/128 is the multicast address.

- D. ::/0 is the anycast address, and ::/128 is the multicast address.
- E. ::/0 is the default route, and ::/128 is the unspecified address.
- F. ::/0 is the anycast address, and ::/128 is the default address.

Answer: E

17. Refer to the exhibit. What statement is true about the configuration on switch CAT1?



```
CAT1# show running-config
<output omitted>
mls qos map cos-dscp 0 8 16 45 45 45 48 56
mls qos
<output omitted>
interface FastEthernet0/11
 description IP-Phone, workstation
 switchport access vlan 40
 switchport mode access
 switchport voice vlan dot1p
 switchport priority extend cos 4
 switchport port-security
 switchport port-security maximum 2
 switchport port-security mac-address 0008.8595.d1a7
 switchport port-security mac-address 0800.20ac.24b8
 mls qos trust cos
 spanning-tree portfast
!
interface FastEthernet0/12
 description IP-Phone, work station
 switchport access vlan 40
 switchport mode access
 switchport voice vlan dot1p
 switchport priority extend cos 4
 switchport port-security
 switchport port-security maximum 2
 switchport port-security mac-address 0007.8595.d2b7
 switchport port-security mac-address 0080.20ac.24b9
 mls qos trust cos
 spanning-tree portfast
```

- A. The configuration overrides 802.1p priorities on packets entering ports Fa0/11 and Fa0/12 with a value of 48.
- B. The configuration establishes policed DSCP on ports Fa0/11 and Fa0/12 with values ranging from 8 to 56.
- C. The configuration overrides the Quality of Service value in packets entering ports Fa0/11 and Fa0/12 with a value of 45.
- D. Two IP phones with the MAC addresses of 0008.8595.d1a7 and 0007.8595.d2b7 are connected to

CAT1 ports Fa0/11 and Fa0/12, respectively.

E. Security violation shutdown mode has been activated for ports Fa0/11 and Fa0/12.

F. Untagged Port VLAN ID (PVID) frames will carry voice traffic on VLAN 40.

Answer: D

18. Which statement is true regarding the configuration of ISL trunks?

A. All Catalyst switches support ISL trunking.

B. A Catalyst switch will report giants if one side is configured for ISL while the other side is not.

C. ISL trunking requires that native VLANs match.

D. A Catalyst switch cannot have ISL and IEEE 802.1q trunks enabled.

Answer: B

19. Which three components are included in the Cisco autonomous WLAN solution?(Choose three.)

A. Wireless LAN Solution Engine (WLSE)

B. Access Control Server (ACS)

C. Wireless Control System (WCS)

D. Wireless Services Module (WiSM)

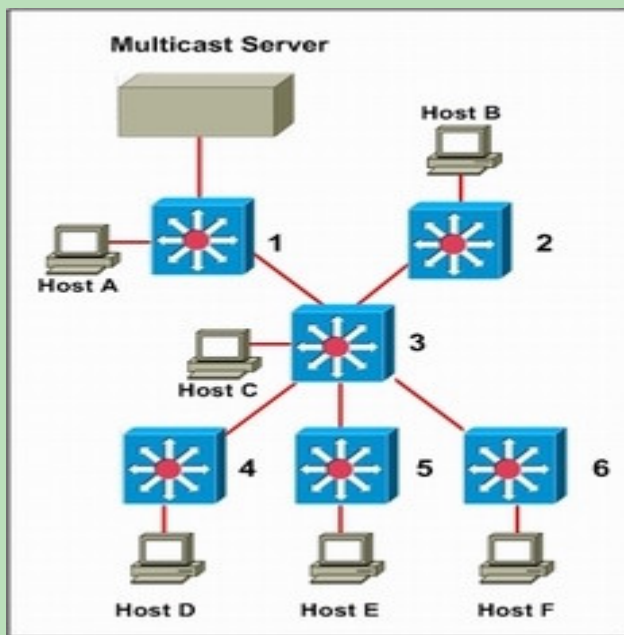
E. Wireless Domain Services (WDS)

F. Lightweight Access Point Protocol (LWAPP)

Answer: ABE

20. Refer to the exhibit. All multilayer switches are running PIM sparse mode. Host B and Host

F are sending IGMPv2 join messages to their respective multilayer switches. Which statement is true?



- A. The multicast server is the rendezvous point of the multicast tree.
- B. Switches 1, 2, 3, and 6 will participate in the multicast tree once pruning has taken place.
- C. Switches 2 and 6 will participate in the multicast tree once pruning has taken place.
- D. Switches 1, 2, 3, and 6 will participate in the multicast tree.
- E. Switch 1 is the rendezvous of the multicast tree.

Answer: D

21. Which commands are required to properly configure a router to run OSPF and to add network 192.168.16.0/24 to OSPF area 0? (Choose two.)

- A. Router(config)# router ospf 0
- B. Router(config)# router ospf 1
- C. Router(config)# router ospf area 0
- D. Router(config-router)# network 192.168.16.0 0.0.0.255 0
- E. Router(config-router)# network 192.168.16.0 0.0.0.255 area 0
- F. Router(config-router)# network 192.168.16.0 255.255.255.0 area 0

Answer: BE

22. Refer to the show interface Gi0/1 switchport command output shown in the exhibit. Which two

statements are true about this interface? (Choose two.)

```
Core1# show interfaces gigabitethernet0/1 switchport
Name: Gi0/1
Switchport: Enabled
Administrative Mode: static access
Operational Mode: static access
Administrative Trunking Encapsulation: dot1q
Operational Trunking Encapsulation: native
Negotiation of Trunking: Off
Access Mode VLAN: 7 (Core)
Trunking Native Mode VLAN: 1 (default)
Voice VLAN: none
Administrative private-vlan host-association: none
Administrative private-vlan mapping: none
Administrative private-vlan trunk native VLAN: none
Administrative private-vlan trunk encapsulation: dot1q
Administrative private-vlan trunk normal VLANs: none
Administrative private-vlan trunk private VLANs: none
Operational private-vlan: none
Trunking VLANs Enabled: ALL
Pruning VLANs Enabled: 2-1001
Capture Mode Disabled
Capture VLANs Allowed: ALL
Protected: false
Unknown unicast blocked: disabled
Unknown multicast blocked: disabled

Appliance trust: none
```

- A. This interface is a dot1q trunk passing all configured VLANs.
- B. This interface is configured for access mode.
- C. This interface is a member of VLAN1.
- D. This interface is a member of VLAN7.
- E. This interface is a member of a voice VLAN.

Answer: BD

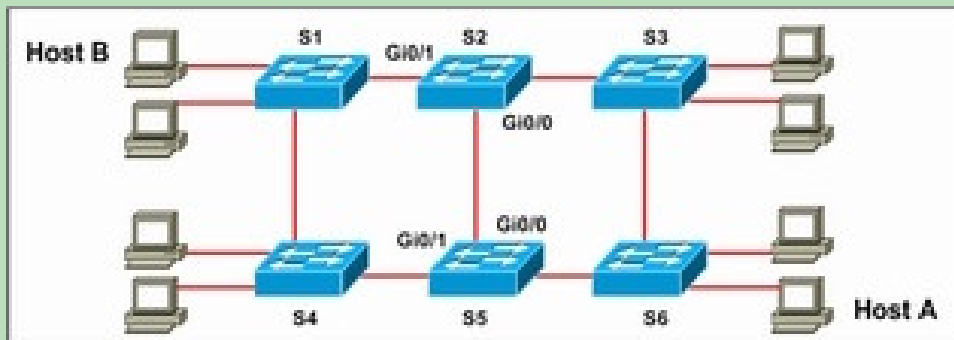
23. What is the IPv6 address FF02::2 used for?

- A. all hosts in a local segment
- B. all routers in a local segment
- C. all hosts in a particular multicast group
- D. all routers in an autonomous system

Answer: B

24. Refer to the exhibit. The command spanning-tree guard root is configured on interface Gi0/0 on both switch S2 and S5. The global configuration command spanning-tree uplinkfast has been configured on

both switch S2 and S5. The link between switch S4 and S5 fails. Will Host A be able to reach Host B?



- A. Yes. Traffic can pass either from switch S6 to S3 to S2 to S1, or, from switch S6 to S5 to S2 to S1.
- B. No. Traffic will pass from switch S6 to S5 and dead-end at interface Gi 0/0.
- C. No. Traffic will loop back and forth between switch S5 and S2.
- D. Yes. Traffic will pass from switch S6 to S3 to S2 to S1.
- E. No. Traffic will either pass from switch S6 to to S5 and dead-end, or traffic will pass from switch S6 to S3 to S2 and dead-end.

Answer: D

25. For what purpose is the command config network webmode enable used?

- A. to allow HTTPS access to the WLAN controller
- B. to allow HTTP access to the WLAN controller
- C. to allow SSH access to the CLI of the WLAN controller
- D. to allow SSL access to the CLI of the WLAN controller

Answer: A

26. What three statements are true for networks that are enabled for voice as well as data traffic? (Choose three.)

- A. An uptime of 99.999 percent is achieved using a 4-hour service response contract for system problems.
- B. Auxiliary VLANs provide the ability to apply QoS to voice traffic without affecting the flow of data from the client PC.
- C. Redundant hardware, redundant links, UPS, and proactive network management are data network

standards that do not apply to voice networks.

D. The increased costs of voice enabled networks are offset by increased worker productivity.

E. For ease of implementation, most VoIP phones use in-line power to get power through the same cable on which data is sent.

F. High availability networks must be created to avoid network congestion and overcome a lack of redundancy and poor engineering.

Answer: BEF

27. A network administrator assigns a multicast address of 239.255.8.5 to an application running on a device with an Ethernet MAC address of 01.b2.7d.05.f1.80. Which Layer 2 multicast address will this device use?

A. 01.00.5e.7F.08.05

B. 01.b2.7d.05.f1.80

C. 01.b2.7d.0a.08.05

D. 01.00.5e.05.f1.80

E. ff.ff.ff.ff.ff.ff

Answer: A

28. Which two statements about the IS-IS routing protocol are true? (Choose two.)

A. In the IS-IS routing domain, routers may have adjacencies with other routers on multipoint links.

B. IS-IS metrics are based on delay, bandwidth, reliability, load, and MTU.

C. Level 1 routers learn about paths within the areas that the routers are connected to.

D. Level 2 routers are equivalent to ABRs in OSPF and learn about paths both within and between areas.

E. Level 1 and Level 2 routing is a function of ES-IS.

Answer: AC

29. Which two provide intra-area routing services? (Choose two.)



- A. L1 IS
- B. L1 ES
- C. L2 IS
- D. L2 ES
- E. L1/L2 IS

Answer: A

30. Which type of IGMP message is sent when a network client wants to join a multicast group?

- A. host membership query
- B. host membership report
- C. host membership status
- D. host membership notification

Answer: B



We was founded in 2006. The safer,easier way to help you pass any IT Certification exams . We provide high quality IT Certification exams practice questions and answers(Q&A). And help you pass any IT Certification exams at the first try.

**Customer Support :
support@Killtest.com**