



Exam : **Cisco 642-845**

Title : ONT - Optimizing Converged
Cisco Networks

Update : Demo

1. Which one of the following statements correctly describes an FXO interface?

- A. analog trunks that connect a gateway to plain old telephone service (POTS) device such as analog phones, fax machines, and legacy voice-mail systems
- B. analog trunks that provide the Survivable Remote Site Telephony (SRST) feature
- C. analog trunks that provide VoIP gateway functionality
- D. analog trunks that connect a gateway to a central office (CO) or private branch exchange (PBX)

Answer: D

2. Cisco AutoQoS is innovative technology that minimizes the complexity, time, and operating cost of Quality of Service (QoS) deployment. Which two steps are executed in the deployment of Cisco AutoQoS for Enterprise? (Choose two.)

- A. The customer uses SNMP statistics to create the policy.
- B. QoS policy templates are generated and installed on the interface.
- C. The auto-generated policy is manually optimized before implementation.
- D. Auto-discovery is used to determine what traffic is on the interface.

Answer: BD

3. Quality of Service (QoS) refers to the capability of a network to provide better service to selected network traffic over various technologies .Which two options are true about the application of QoS in a converged network? (Choose two.)

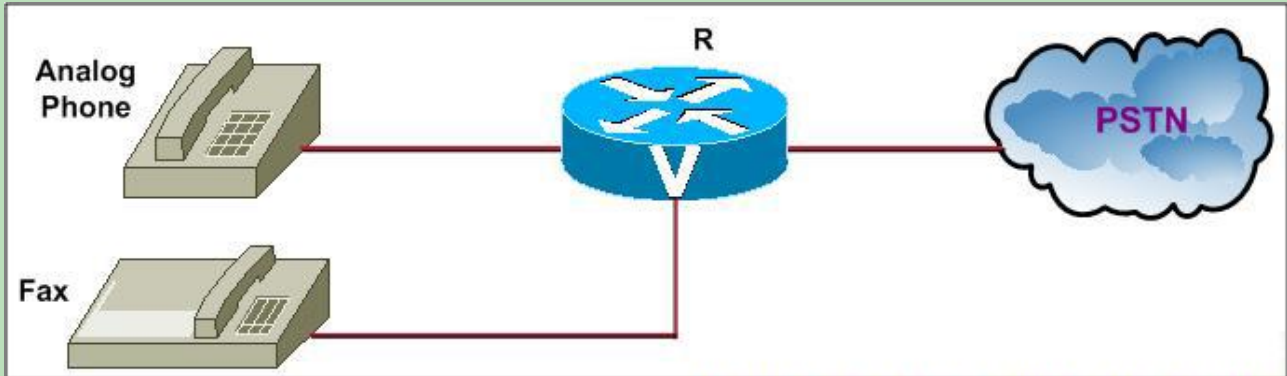
- A. End-to-end network delay is not a factor as long as the delay is consistent.
- B. Some packet loss can be corrected by codec algorithms.
- C. End-to-end network delay times that exceed 50 ms for real-time traffic are considered unacceptable.
- D. End-to-end network delay times that exceed 250 ms for real-time traffic are considered unacceptable.

Answer: BD

4. Network topology exhibit:

You are a network technician at TestInside.com, examine the exhibit carefully. You need to finalize the configuration of router TIS-R in this scenario. In particular you should decide which interface types can be

used for connecting router TIS-R to the phone and fax respectively. (Choose two.)



- A. Connect the analog phone to an FXS port.
- B. Connect the fax to an FXS port.
- C. Connect the fax to an FXO port.
- D. Connect the analog phone to an FXO port.

Answer: AB

5. Look at the following options, which one is not a benefit of VoIP compared to traditional circuit-switched telephony?

- A. Access to new communication devices
- B. Consolidated network expenses
- C. Improved employee productivity
- D. Higher voice quality

Answer: D

6. On the basis of the following traffic descriptions, which one is used for marking?

- A. FIFO Layer 2 descriptor labels (L2DL)
- B. WRED (Weighted RED) orange or green labels
- C. MPLS experimental bits
- D. Header compression tags

Answer: B

7. You are a network technician at TestInside.com, do you know what are two of the three predefined classes for the Cisco SDM wizard? (Choose two.)

- A. best effort
- B. middle class
- C. high priority
- D. business-critical

Answer: AD

8. You work as a network technician, study the following options carefully. A GRE tunnel is configured between a local and a remote site. Where should the service policy be applied to classify packets based on the pretunnel header?

- A. Apply the service policy on the physical interface but do not use the qos pre-classify command.
- B. In global configuration mode, apply the service policy and use the qos pre-classify command.
- C. In global configuration mode, apply the service policy but do not use the qos pre-classify command.
- D. Apply the service policy on the tunnel interface but do not use the qos pre-classify command.

Answer: D

9. Which option is not considered one of the main methods to tackle the bandwidth availability problem?

- A. Use compression techniques.
- B. Increase (upgrade) the link bandwidth.
- C. Forward large packets first.
- D. Classify and mark traffic and deploy proper queuing mechanisms.

Answer: C

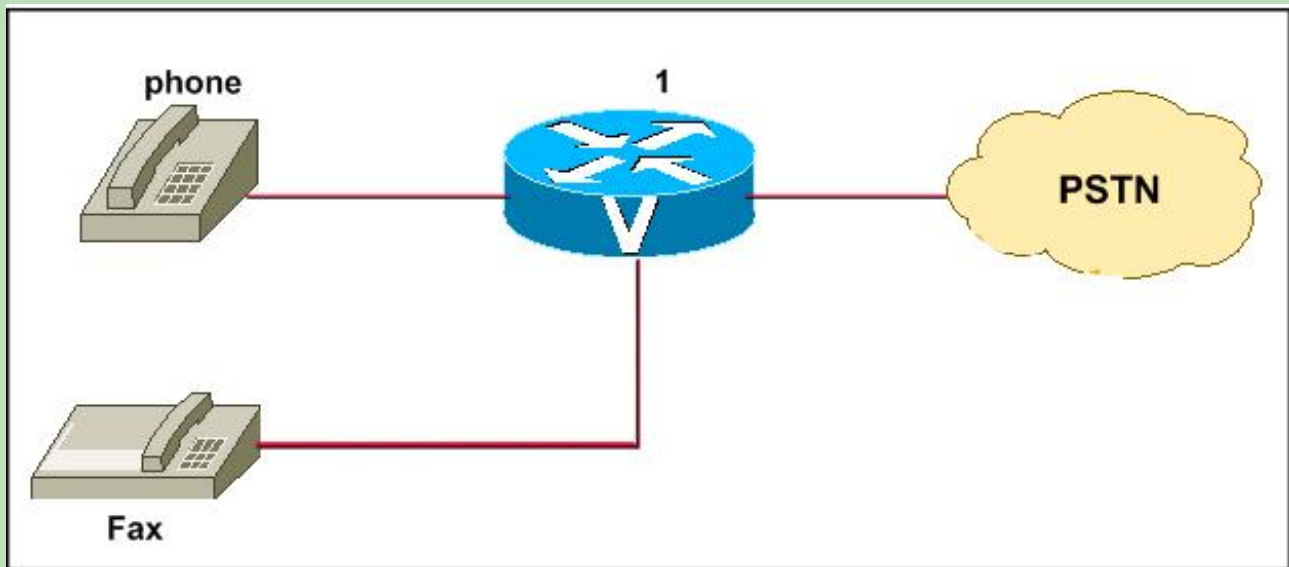
10. Refer to the capabilities of a voice gateway router, which statement is true ?

- A. Voice gateways need a gatekeeper to interconnect the VoIP networks with the PSTN network.
- B. Voice gateways equipped with a DSP module can take the role of the call agent during WAN failure.
- C. Voice gateways with Cisco Unified CallManager Express (CME) can permanently act as a call agent for IP phones.

D. Voice gateways with analog interfaces need a gatekeeper to convert analog signals into digital format before voice is encapsulated into IP packets.

Answer: C

11. You work as a network engineer at TestInside.com, study the exhibit carefully. What type of interface will connect the voice gateway router TIS1 to the TestInside phone and the fax machine?



A. The TestInside phone will be connected to the FXS port, and the fax machine will be connected to the FXO port on router TIS1.

B. Both devices will be connected to the E and M ports on router TIS1.

C. Both devices will be connected to the FXS ports on router TIS1.

D. The TestInside phone will be connected to the FXO port, and the fax machine will be connected to the FXS port on router TIS1.

Answer: C

12. You work as a network engineer at TestInside.com, so you should know the sampling rules. One of the most important rules of sampling is called the Nyquist Theorem, which states that the highest frequency which can be correctly represented is less than one-half of the sampling rate. On the basis of the Nyquist theorem, what sampling rate is required to support voice frequencies of up to 4000 Hz?

A. 4000 samples per second

B. 2000 samples per second

- C. 6000 samples per second
- D. 8000 samples per second

Answer: D

13. Cisco AutoQoS is innovative technology that minimizes the complexity, time, and operating cost of Quality of Service (QoS) deployment. Which option is correct about the configuration of AutoQoS on a Frame Relay interface?

- A. Multilink PPP (MLP) over Frame Relay must be manually configured on low speed DLCIs.
- B. AutoQoS can be configured on a Frame Relay DLCI only if a map class is attached to the DLCI.
- C. For low-speed Frame Relay DLCIs with Frame Relay-to-ATM Interworking, the AutoQoS cannot be configured if a virtual template is already configured for the DLCI.
- D. AutoQoS can be configured from a different subinterface if the DLCI is already assigned to one subinterface.

Answer: C

14. Wired Equivalent Privacy (WEP) is a deprecated algorithm to secure IEEE 802.11 wireless networks. Which one of the following statements is not a weakness of WEP?

- A. Because with basic WEP the wireless client does not authenticate the access point, the client can be victimized by rogue access points.
- B. With enough data captured, even with initialization vector used, the WEP key can be deduced.
- C. WEP is vulnerable to dictionary attacks.
- D. The WEP usage of certificates is not convenient for some customers.

Answer: D

15. If you are a network technician, can you tell me what are two major sources of delay that can be managed by QoS in voice-enabled networks? (Choose two.)

- A. packets dropped because of CRC errors
- B. propagation delay
- C. header overhead

D. congested egress queues

Answer: CD

16. Which one of the following descriptions is correct about the Cisco 2700 Location Appliance collection of location information for wireless devices?

A. The APs collect received signal strength indication (RSSI) information from all Wi-Fi devices and forward the information to the Cisco Wireless Location Appliance through the LWAPP.

B. An AP collects RSSI information which is forwarded to wireless controllers through LWAPP. Wireless controllers forward aggregated RSSI to the location appliance through SNMP.

C. The Cisco WLAN controllers bypass the received signal strength indication (RSSI) information from all Wi-Fi devices to the Cisco Wireless Location Appliance through LWAPP.

D. All Wi-Fi devices on the WLAN send directly received signal strength indication (RSSI) information to the Cisco Wireless Location Appliance through SNMP.

Answer: B

17. You are a network technician at TestInside.com. Your task is to extend QoS in the TestInside network to include wireless LAN. In which device or devices is wireless QoS implemented for Cisco Lightweight AP split-MAC architecture?

A. The Wireless LAN Controller only

B. The AP only

C. Between the AP and Catalyst switch via 802.1p

Leading the way in IT testing and certification tools, www.topcerts_demo.com

D. Between the AP and Wireless LAN Controller via LWAPP

Answer: D

18. Which two options about the DiffServ QoS model are correct? (Choose two.)

A. The flow-based approach of the DiffServ model is ideal for large scalable implementations such as the public Internet.

B. The DiffServ model is more scalable than the IntServ model.

- C. DiffServ requires RSVP to set up a path through the network to accommodate the requested QoS.
- D. Network traffic is identified by class, and the level of service is chosen for each class.

Answer: BD

19. WLSE-Express provides complete enterprise-class security and control in an integrated solution package. What are two features of WLSE-Express wireless management? (Choose two.)

- A. centralized management with integrated AAA server
- B. integration with the Location Appliance to expand real time tracking to 2500 devices for 30 days
- C. integration with the Location Appliance to expand real time tracking to 1500 devices for 30 days
- D. centralized management for autonomous access points

Answer: AD

20. Which one is not considered a valid classification traffic descriptor?

- A. Source or destination address
- B. Traffic path
- C. IP precedence or DSCP value
- D. Incoming interface

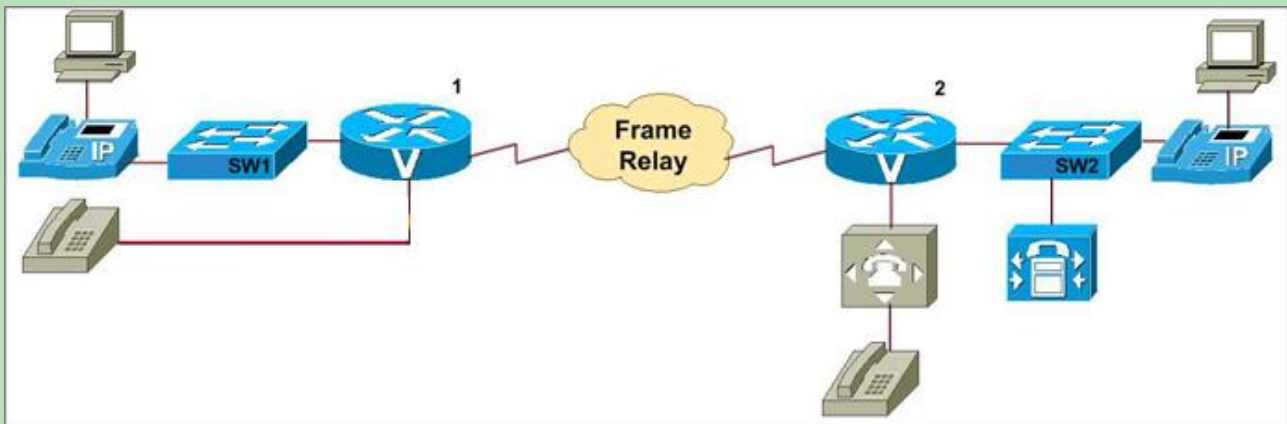
Answer: B

21. Which three descriptions are correct about the application of QoS models? (Choose three.)

- A. The DiffServ model requires applications to signal the network with QoS requirements.
- B. The best effort model is suitable for applications such as file transfer and e-mail
- C. The IntServ model requires applications to signal the network with QoS requirements.
- D. The DiffServ model can be used to deliver QoS based upon IP precedence, or source and destination addresses.

Answer: BCD

22. Study the exhibit carefully. The serial link connecting the two offices has a bandwidth of 128 kbps. What could be done to set aside 64 kbps of bandwidth to transport VoIP traffic over the WAN link?



- A. Apply the auto-cost reference-bandwidth 64 command on both sides of the serial link.
- B. Apply the ip bandwidth-percent eigrp 1 64 command on both sides of the serial link.
- C. Apply the frame-relay voice-bandwidth 64000 command to enable the QoS Call Admission Control feature on the serial link.
- D. Apply the max-conn 64 command on a serial peer basis on both sides of the serial link.

Answer: C

23. A Cisco WCS is being used to manage the TestInside wireless network. Which Cisco Wireless Control System (WCS) description is correct?

- A. Cisco WCS software is used for WLAN planning, configuration, and management.
- B. The Cisco WCS base software provides on-demand location of rogue APs and clients to within 33 feet (10 meters).
- C. The three versions of Cisco WCS are WCS Base, WCS Location, and WCS Express.
- D. Up to 2,500 APs can be supported from a single Cisco WCS console.

Answer: A

24. As a network technician, can you tell me which three configuration tasks are required to successfully deploy NBAR to recognize TCP and UDP stateful protocols? (Choose three.)

- A. Use the random-detect dscp command to modify the default minimum and maximum thresholds for the DSCP value.
- B. Use the service-policy command to attach a traffic flow to an interface on the router.
- C. Use the policy-map command to define one or more QoS policies (such as shaping, policing, and so on)

to apply to traffic defined by a class map.

D. Use the class-map command to define one or more traffic classes by specifying the criteria by which traffic is classified.

Answer: BCD

25. There are many reasons for network congestion ,what is the most common cause of network congestion?

A. flapping Ethernet interfaces caused by misconfigured LAN interfaces

B. aggregation congestion occurring at the core layer where the different distribution layer devices feed traffic to the core-layer switches

C. speed mismatches when moving from a low-speed LAN environment to a higher speed WAN environment

D. speed mismatches when moving from a high-speed LAN environment to a lower speed WAN environment

Answer: D

26. Which one of the following options shows the correct mapping of 802.11e priority levels to WMM access categories?

A. Voice(Platinum)=6/7, Video(Gold)=4/5, Best-Effort(Silver)=3/2, Background(Bronze)=0/1

B. Voice(Platinum)=6/7, Video(Gold)=4/5, Best-Effort(Silver)=1/2, Background(Bronze)=0/3

C. Voice(Platinum)=6/7, Video(Gold)=4/5, Best-Effort(Silver)=0/3, Background(Bronze)=1/2

D. None of the above

Answer: C

27. The Cisco Autonomous WLAN solution reduces overall operational expenses. What are two components of the Cisco Autonomous WLAN solution? (Choose two.)

A. LWAPP

B. WDS

C. WLC

D. WLSE

Answer: BD

28. WPA is a security technology for wireless networks. What are three security problems with Wi-Fi Protected Access (WPA)? (Choose three.)

- A. WPA is based on the outdated IEEE 802.11i standard.
- B. WPA is susceptible to a security weakness when preshared keys are used.
- C. WPA uses TKIP, which uses the same base encryption algorithm as WEP.
- D. WPA is susceptible to a DoS attack when it receives two packets in quick succession with bad MICs, forcing the AP to shut down the entire Basic Service Set (BSS) for one minute.

Answer: BCD

29. You are tasked to install WCS on a management station to monitor the TestInside wireless network. Which two operating systems are supported by Cisco for WCS wireless management installation and operation? (Choose two)

- A. Windows XP Professional
- B. Red Hat Enterprise Linux ES 3
- C. MAC OS X v10.3 or later
- D. Windows 2000 Server with SP4 or later

Answer: BD

30. When the QoS-for-VPNs feature (QoS pre-classify) provides packet classification and applies appropriate QoS service on tunnel interfaces, do you know which three characteristics of the traffic flow should be taken into consideration? (Choose three.)

- A. IP precedence bits
- B. source IP address
- C. original port numbers
- D. destination IP address

Answer: BCD



KillTest.com was founded in 2006. The safer,easier way to help you pass any IT Certification exams . We provide high quality IT Certification exams practice questions and answers(Q&A). Especially [Adobe](#), [Apple](#), [Citrix](#), [Comptia](#), [EMC](#), [HP](#), [HuaWei](#), [LPI](#), [Nortel](#), [Oracle](#), [SUN](#), [Vmware](#) and so on. And help you pass any IT Certification exams at the first try.

You can reach us at any of the email addresses listed below.

English Customer:

Chinese Customer:

Sales : sales@Killtest.com

sales@Killtest.net

Support: support@Killtest.com

support@Killtest.com

English Version <http://www.KillTest.com>

Chinese (Traditional) <http://www.KillTest.net>

Chinese (Simplified) <http://www.KillTest.cn>